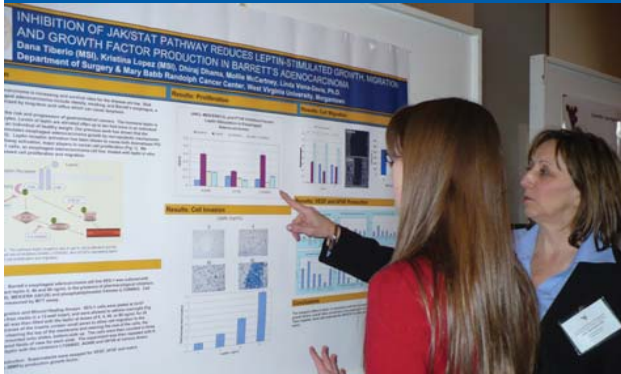


What is Cancer Cell Biology?

It is an interdisciplinary program that utilizes basic science knowledge and experimental approaches to study fundamental concepts of cancer etiology and progression. The fields of cell biology, biochemistry, immunology, microbiology, pharmacology, pathology, epidemiology, genetics, and molecular biology are all employed. The Cancer Cell Biology Program at WVU uses modern intellectual and technological advances to enhance our understanding of cancer at the cellular level in order to provide new and innovative rationales for future treatment.



Cancer Cell Biology Program

The Graduate Program in Cancer Cell Biology offers interdisciplinary biomedical research training leading to the Ph.D. and M.D./Ph.D. degrees.

We are affiliated with the WVU School of Medicine and the Mary Babb Randolph Cancer Center.

<http://www.hsc.wvu.edu/mbrcc/>

We are one of 50 institutions recognized by the national Cancer Biology Training Consortium (CABTRAC).

For information about our Cancer Cell Biology program requirements

<http://www.hsc.wvu.edu/mbrcc/research/graduateEdu.asp>

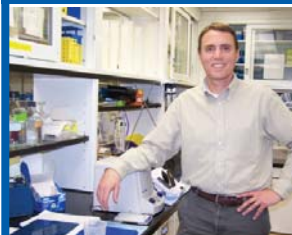
To apply online:

<http://www.hsc.wvu.edu/ResOff/Education/ProspectiveStudents/AppInfoCriteria.aspx>



MARY BABB
RANDOLPH CANCER CENTER
at West Virginia University

Contact us:



Scott Weed, Ph.D.
Graduate Program
Director

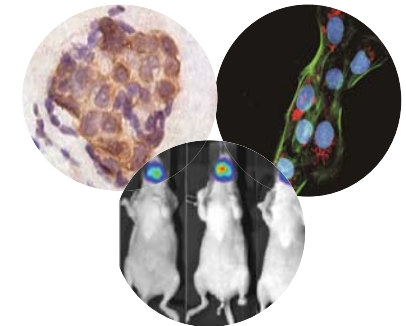
sweed@hsc.wvu.edu

(304) 293-3016



Graduate Program in Cancer Cell Biology

Research training and career development in the experimental science of cancer biology



 **West Virginia University**
SCHOOL OF MEDICINE

Graduate Program in Cancer Cell Biology

Foundation Curriculum

Introduction to Cancer Cell Biology
Oncogenes and Signaling Networks
Special Topics in Cancer Cell Biology
Tumor Pathology and Therapeutics

Opportunities for Academic Enrichment

Interaction of trainees with clinicians who manage patient care
Work with patient samples
Attendance at interdisciplinary tumor board
Participation in specialized oncology programs
Gain experience in clinical trial design



Jason Evans, Current Student

Supported by Core Facilities with State-of-the-Art Equipment

Microscope Imaging
Animal Models and Imaging
Flow Cytometry
Protein Core
Biospecimen Processing
Biostatistics and Bioinformatics

CCB Program Available Mentors 2010-2011

Yehew Agazie-Phosphatase signaling in breast cancer
Steve Frisch-Molecular regulation of apoptosis
Laura Gibson-Leukemic-host interactions in the tumor microenvironment
Lan Guo-Bioinformatics and predictive gene signatures in cancer
Alexey Ivanov- Regulation of gene transcription by sumoylation
Jun Liu-Endothelial cell motility in angiogenesis
Elena Pugacheva-Scaffolding-based signaling in breast cancer
Yon Rojanasakul-Reactive oxygen species in cancer progression
Mike Ruppert-Tumor suppressor gene regulation
Mike Schaller-Tyrosine kinase signaling in cancer
Peter Stoilov-Alternative splicing events as cancer drug targets
William Tse-Therapeutic targeting of leukemic oncogenes
Scott Weed-Actin cytoskeletal regulation in tumor invasion
Robert Wysolmerski-Mechano-force transduction in angiogenesis

Comments from Recent Trainees



Kelly M. Bailey
MD/PhD Student

Defense Date: May 16, 2008

Current Position: University of Michigan Pediatric Oncology

"I am now going to finish the 3rd and 4th years of medical school. In the future, I plan to do my residency in Internal Medicine and eventually practice in the field of Oncology. I aim to find a residency program that will allow me to continue doing research throughout the remainder of my physician-scientist training."

Brooke Helfer
PhD Student

Defense date: June 26, 2008



Current Position: Senior Research Scientist
Celsense, Inc., Pittsburgh, Pa

Brooke is working in industry to find products that enable real-time MRI detection of inflammation and cellular therapeutics. She writes:

"The CCB program at WVU is great for collaborative efforts. I loved how open faculty were to discuss my project and future goals. There are many great PIs to choose from, and if I had to do it over again, I definitely would!"

<http://www.hsc.wvu.edu/mbrcc/graduateEdu.asp>